

stryker®

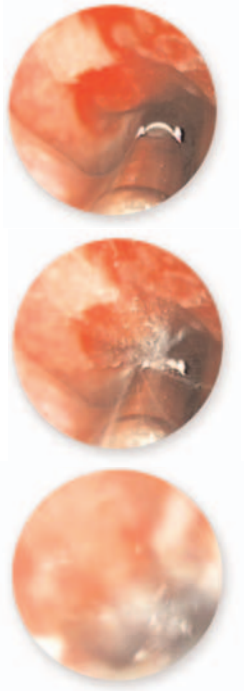
ESSx™ Microdebrider

**Bringing power and efficiency to
your operating room.**



ESSx Microdebrider

5290-601-200



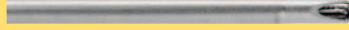
- **Max RPM in oscillation mode (standard):** 5,000 RPM
- **Straight through suction:** Helps ensure less clogging
- **Improved patented flush feature:** Surgeon can manually unclog hand piece using its own irrigation out flow allowing for quicker removal of clots and decreased OR time
- **Integrated scope cleaning:** Cleans the endoscope allowing for less manual cleaning during the case
- Preserves mucous membranes
- Improved ergonomics and balance
- Increased cutting efficiency

Precision Cutters



SharpEdge

Part #	Dia.	Length
5290-340-000	4.0 mm	8cm



Aggressive

Part #	Dia.	Length
5290-648-000	4.0 mm	8cm
5290-638-000	3.5 mm	8cm
5290-628-000	2.5 mm	8cm
5290-011-000	4.0 mm	11cm



Aggressive Serrated

Part #	Dia.	Length
5290-645-000	4.0 mm	8cm
5290-635-000	3.5 mm	8cm



Jaguar

Part #	Dia.	Length
5290-540-000	4.0 mm	8cm
5290-530-000	3.5 mm	8cm



Angled Aggressive 60°

Part #	Dia.	Length
5290-760-100	4.0 mm	11cm



Angled Aggressive 40°

Part #	Dia.	Length
5290-740-100	4.0 mm	11cm



Angled Aggressive 12°

Part #	Dia.	Length
5290-744-100	4.0 mm	11cm



Angled Aggressive 40° Convex

Part #	Dia.	Length
5290-740-200	4.0 mm	11cm



Angled Aggressive Serrated 40°

Part #	Dia.	Length
5290-440-100	4.0 mm	8 cm



Angled Aggressive Serrated 60°

Part #	Dia.	Length
5290-640-100	4.0 mm	8 cm

Burs



Hooded Round Bur

Part #	Dia.	Length
5290-647-000	3.0 mm	8cm



Unhooded Round Bur

Part #	Dia.	Length
5290-220-000	2.0 mm	8cm

Accessories



iSwitch Receiver
0277-200-100



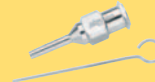
CORE Console
5400-050-000



iSwitch Universal Wireless Footswitch
0277-100-100

Bi-Directional Footswitch
5100-008-000

Irrigation Cassettes
5290-075-000



Mini-Trephination Set
0290-222-000

This document is intended solely for the use of health-care professionals.

The products listed above are CE marked according to the Medical Device Directive 93/42/EEC.

The information presented in this brochure is intended to demonstrate the breadth of Stryker product offerings. Always refer to the package insert, product label and/or user instructions before using any Stryker product. Products may not be available in all markets. Product availability is subject to the regulatory or medical practices that govern individual markets. Please contact your Stryker representative if you have questions about the availability of Stryker products in your area.

Products referenced with ™ designation are trademarks of Stryker.

Products referenced with ® designation are registered trademarks of Stryker.



Literature Number: MTX910001091 Rev.A
MTX/GS 02/08

Copyright © 2008 Stryker

Stryker SA
Cité-Centre
Grand-Rue 90
1820 Montreux
Switzerland

t : +41 21 966 12 01
f : +41 21 966 12 00

www.europe.stryker.com